

still fighting to connect your EMR with your **Immunization Registry?**

the **Qvera Interface Engine** can help...

From the original team of developers who brought you DocuTrak™ and the Rosetta Stone Interface Engine (RSIE) comes a new tool that will change the way your organization connects with the outside world.

The Qvera Interface Engine (QIE) was developed with today's security and interoperability requirements in mind, including connectivity to health information exchange (HIE) networks and immunization (IIS) registries.

Contact Qvera today to learn more about QIE and how it can help you.



achieve **Meaningful Use** with the help of the **Qvera Interface Engine**

Connect your **EMR System** with your state **Immunization Registry**

Easily connect Centricity with your state immunization registry (IIS) and start exchanging information today. QIE's standard IIS interface works with GE, CCC and most custom forms. QIE's configurable web-services layer allows integration with any state immunization registry, regardless of connectivity requirements

Transform your **EMR Database** into a **Virtual HIE Repository**

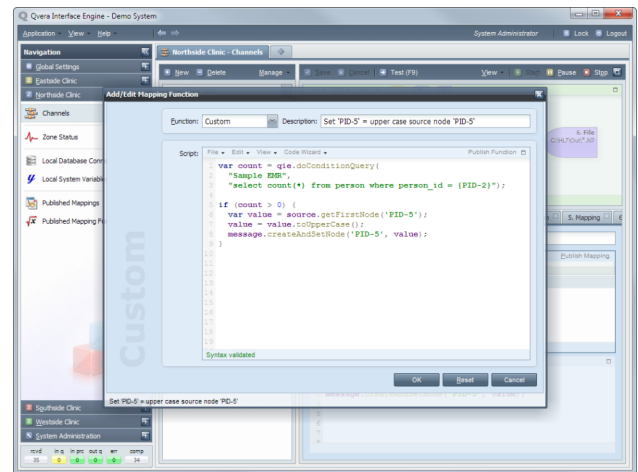
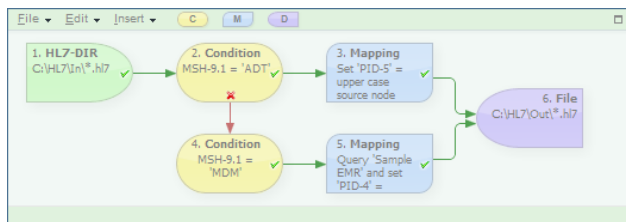
Listen for Cross Enterprise Document Sharing (XDS) requests from other Health Information Exchange (HIE) partners and respond with Continuity of Care Documents (CCD) directly from your EMR database

Automate **CCD Exchange** between **Multiple HIE Repositories** at once

Connect Centricity EMR to multiple HIE repositories or HIE partners simultaneously, and exchange CCD documents with all of them in real time

Enable **Direct Integration** with the **Centricity® Service Layer**

Connect directly to the Centricity Service Layer to automate CCD import, export and other related functions



Unlock your **EMR data** with the power of direct **Database Access**

Query the EMR database directly from within QIE to check for duplicate data entries before importing a message or observation term, add a missing value or segment to an outbound HL7 message, ensure an inbound document is routed to the correct provider, verify that a patient exists in the database before importing data, etc.

Simplify **Secure Data Exchange** with an **ONC-ATCB Certified** solution

QIE 1.0 is certified as an EHR Module and meets the following criteria:

- 170.302(o) Access control
- 170.302(q) Automatic log-off
- 170.302(r) Audit log
- 170.302(s) Integrity
- 170.302(t) Authentication
- 170.302(u) General encryption
- 170.302(v) Encryption when exchanging electronic information

Certification does not represent an endorsement by the U.S. Department of Health and Human Services or guarantee the receipt of incentive payments



www.qvera.com • info@qvera.com • 801-335-5101