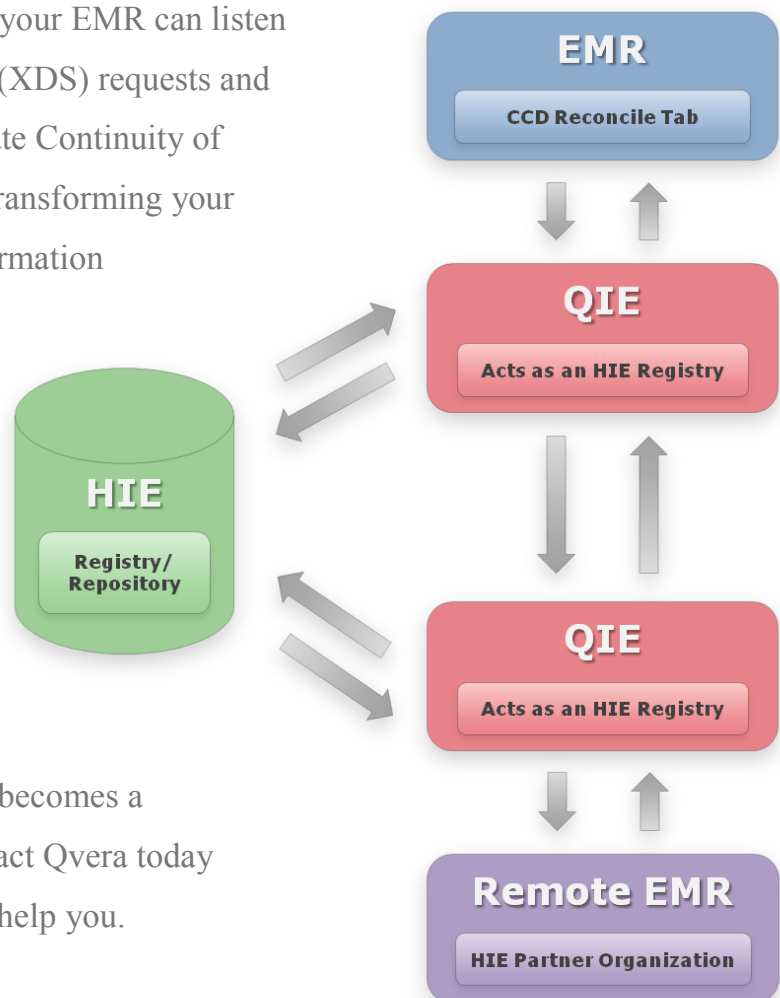


transform your **EMR Database** into a **Virtual HIE Repository** with the help of the **Qvera Interface Engine**

With the Qvera Interface Engine (QIE), your EMR can listen for Cross Enterprise Document Sharing (XDS) requests and respond in real time by sending up-to-date Continuity of Care Documents (CCD) — effectively transforming your EMR database into a virtual Health Information Exchange (HIE) registry/repository.

With QIE, your EMR can connect with multiple HIE registries and/or HIE partners simultaneously and exchange CCD documents with all of them at the same time.

With QIE, health information exchange becomes a reality — not just a target or goal. Contact Qvera today to learn more about QIE and how it can help you.



notable Features & Functionality of the **Qvera Interface Engine**

Manage **Interfaces** using an intuitive **Visual Channel Editor**

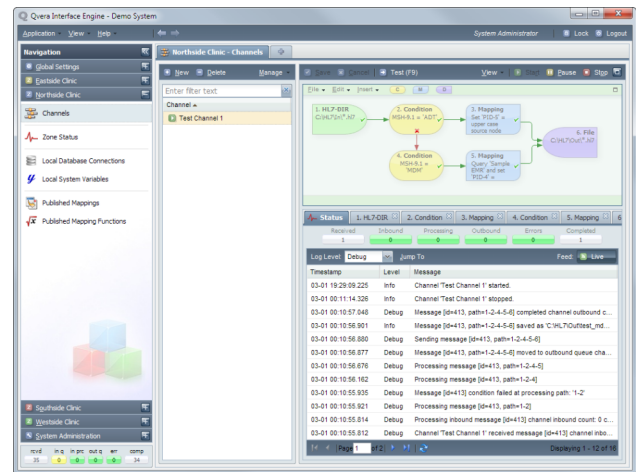
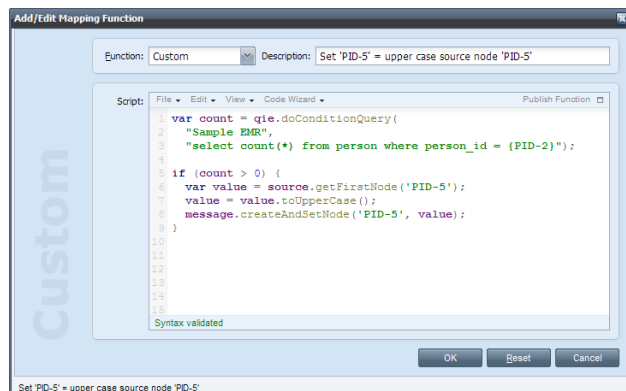
With QIE's Visual Channel Editor, understanding how data flows through the channel (interface) becomes very intuitive. Making changes to a channel's message routing is as simple as dragging and dropping new nodes, or rearranging existing nodes in the visual channel editor.

Create **Custom Functions** with the **Integrated Scripting Framework**

QIE's integrated JavaScript scripting framework significantly extends its power and flexibility. With QIE, you are no longer limited to just a few pre-defined mapping functions. Virtually any function or operation you may need can be scripted and almost all QIE system operations can be customized using this scripting framework.

Edit **Scripts and Messages** using built-in **Smart Editors**

QIE includes "Smart Editors" for editing HL7, XML, SQL, JavaScript, etc. These smart editors include syntax highlighting, automated code validation and many other advanced features which make editing in QIE a breeze.



Connect with **HIE Partners** using the configurable **Web-Services Layer**

QIE includes a configurable web-services layer which allows easy connectivity to health information exchange (HIE) networks, reference laboratories, immunization registries, etc. QIE also includes direct integration with GE's Centricity Service Layer giving you direct access to advanced CCD import/export functionality.

Simplify **Secure Data Exchange** with an **ONC-ATCB Certified** solution

QIE 1.0 is certified as an EHR Module and meets the following criteria:

- 170.302(o) Access control
- 170.302(q) Automatic log-off
- 170.302(r) Audit log
- 170.302(s) Integrity
- 170.302(t) Authentication
- 170.302(u) General encryption
- 170.302(v) Encryption when exchanging electronic information

Certification does not represent an endorsement by the U.S. Department of Health and Human Services or guarantee the receipt of incentive payments

